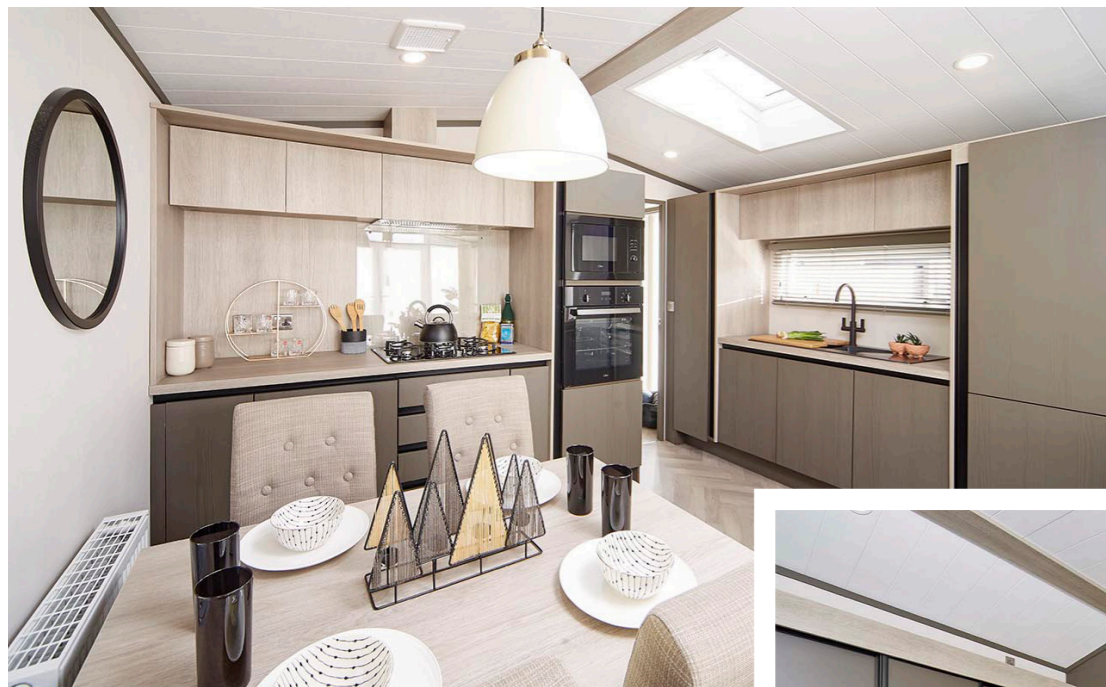


the
Astbury
— LUXURY LODGES

THE LAKEWOOD LODGE

42 X 14 | 2 Bedroom





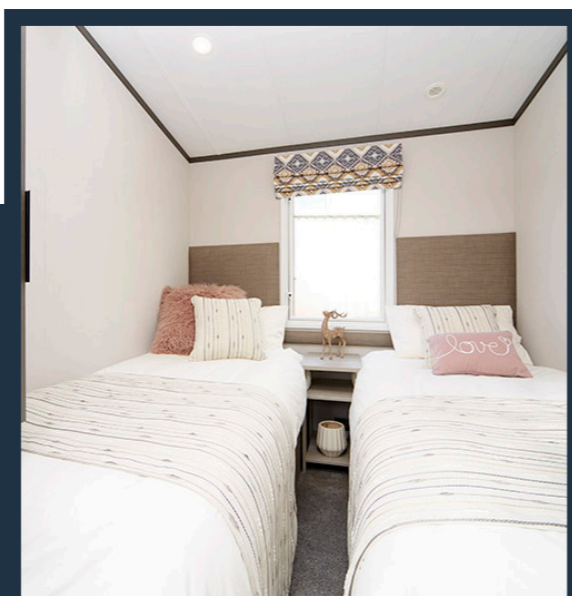
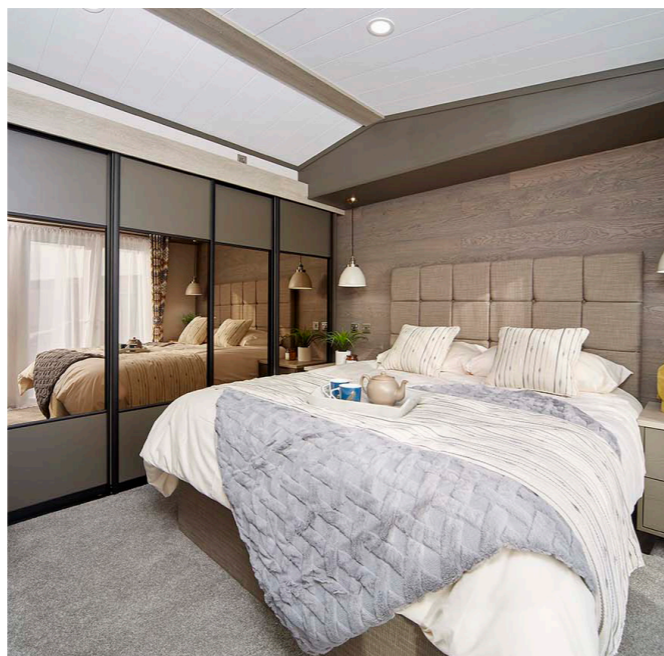
WELCOME TO THE LAKEWOOD LODGE

Combining incredible luxury with modern living, the Lakewood Lodge offers the ultimate home away from home experience.

Designed to bring families and friends together, the open plan living space is filled with natural light from the wide front aspect French doors and windows, which is beautifully complemented by the comfortable warming tones of the colour co-ordinated furnishings. The large, modern kitchen ensures design and function work together in harmony with high-quality integrated appliances and handle-free finishes hide ample storage space.

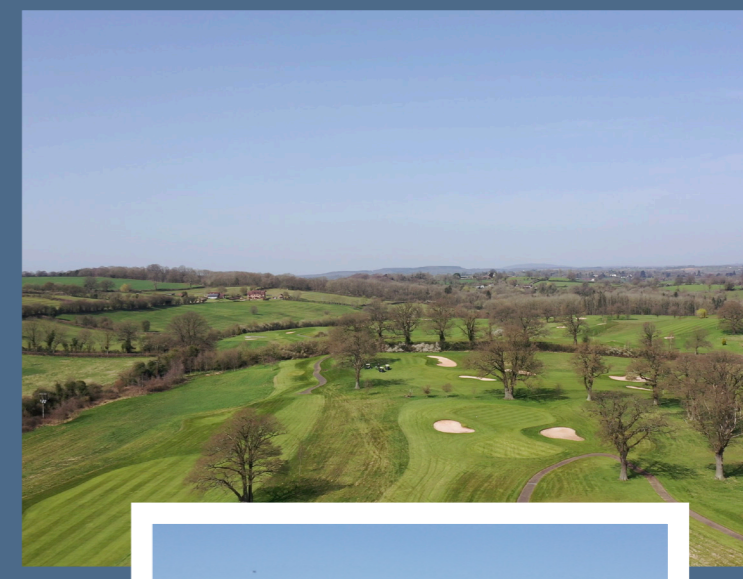
The master bedroom features a soothing colour scheme which is amplified by the feature nature wall. The design of the master bedroom is enhanced by the natural light which flows through the wide, full height window and is reflected by the sliding doors to provide access to the walk-in wardrobe and modern en-suite. The second bedroom continues the colour scheme with twin beds and great storage solutions.

With hidden features throughout, the Lakewood Lodge is as stylish as its functional.



WHY CHOOSE THE ASTBURY?

-  First-class location in the heart of Shropshire countryside
-  Beautifully manicured grounds with panoramic views
-  18-hole championship course & putting green
-  Golf retail shop for all your golf needs
-  Delicious dining at The Astbury Bar & Kitchen
-  Holiday whenever you want with no closed season
-  Excellent earning potential with buy-to-let
-  **COMING SOON** | Brand-new facilities including tennis courts



ASK ABOUT OUR
PLATINUM PACKAGE
UPGRADE!

THE ASTBURY STANDARD

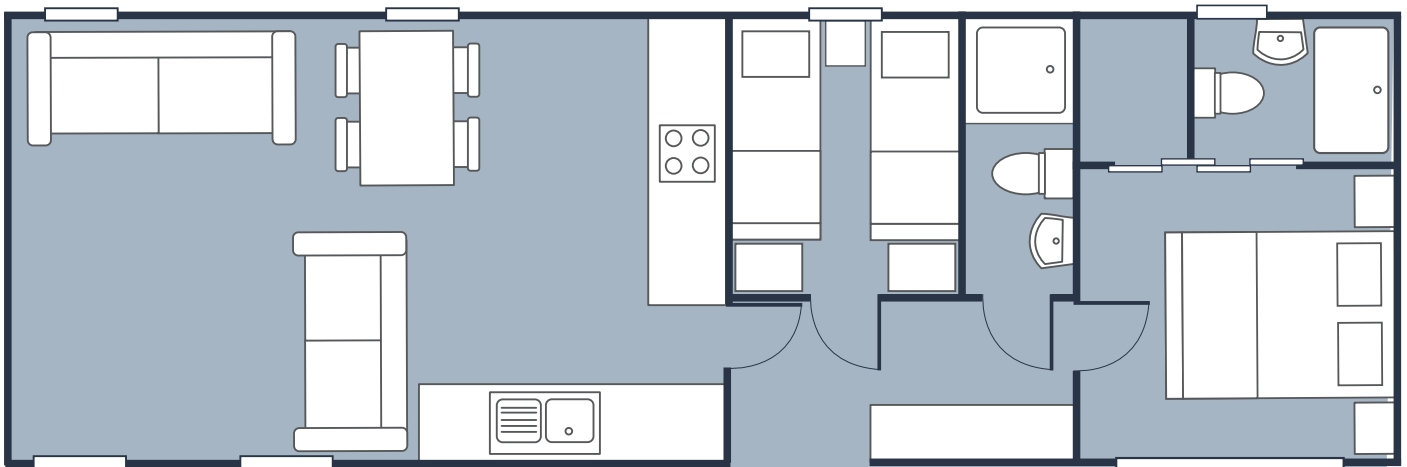
- ★ Fully furnished with stunning interiors
- ★ High-quality integrated appliances
- ★ Premium smart TVs to lounge
- ★ Sumptuous branded bathrobes
- ★ Golf club storage
- ★ Manufacturer's warranty
- ★ Large, low maintenance decking
- ★ Delivery, siting and all utilities connected

KEY FEATURES OF THE LAKEWOOD LODGE

- ✓ Patio French doors to outside decking area
- ✓ Contemporary open plan living space
- ✓ USB charging points throughout
- ✓ Feature electric fireplace and cabinet surround
- ✓ Modern kitchen with integrated appliances incl. five-burner gas hob, oven, microwave, dishwasher & fridge/freezer
- ✓ Freestanding dining table with chairs
- ✓ Walk-in wardrobe and en-suite to master bedroom

BENEFITS OF OWNERSHIP

- ✓ Simple, turnkey holiday home ownership
- ✓ No stamp duty to pay
- ✓ No legal fees to pay
- ✓ Fully managed sublet service
- ✓ Holiday any time of year with no closed season



The Lakewood Lodge | 42 x 14 | 2 Bedroom

For more information, or to arrange your personal viewing appointment, please contact us on:



01746 331777



lodges@theastbury.com

Important notice: These particulars do not form part of any offer or contract and must not be relied upon as statements or representations of fact. Any areas, measurements or distances are approximate. The text, photographs and plans are for guidance only and are not necessarily comprehensive.

All accommodation at The Astbury is sold for HOLIDAY USE ONLY and must not be used as a primary place of residence. Evidence of a permanent address is required before purchasing and on-going annual checks of your permanent home address are a compulsory requirement of ownership.